

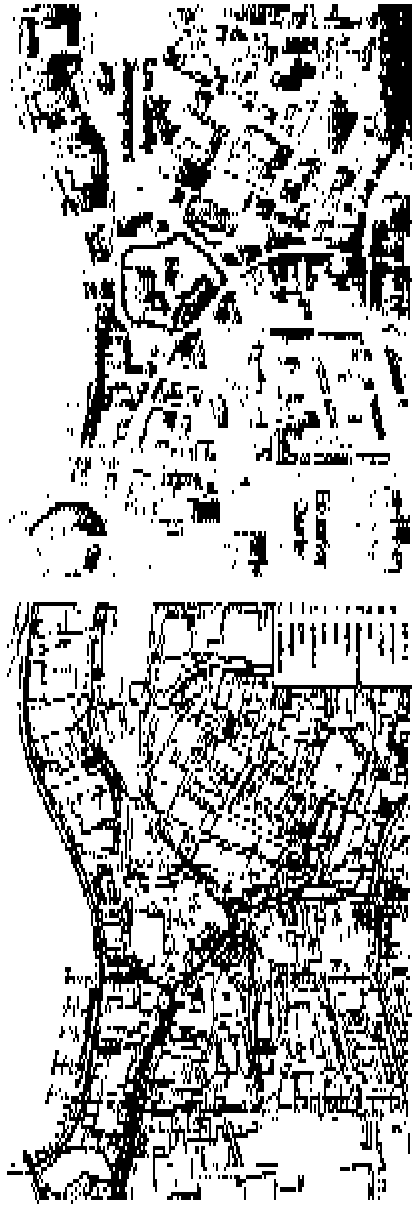
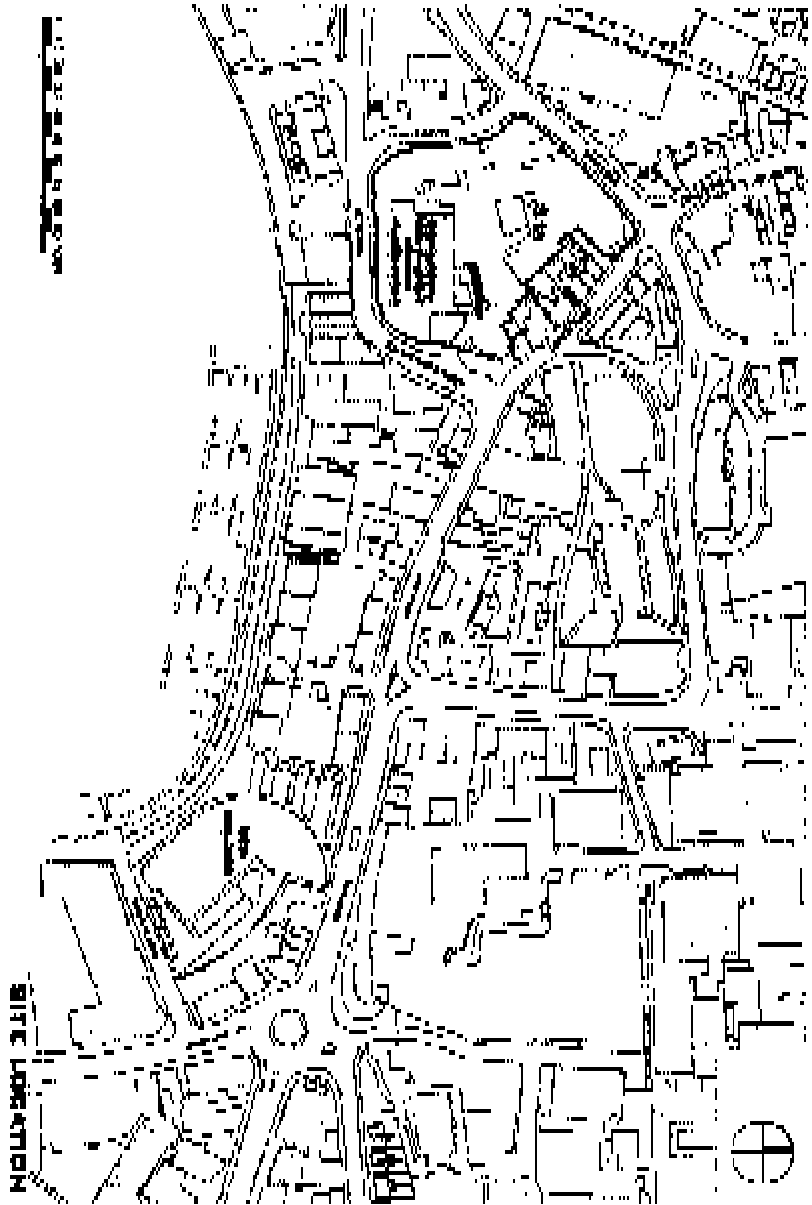
ARCHIVAL

 **Investec**
EPOCH 11 - 0000000001

**INCIDENT VULNERABILITY POLICY REVIEW IP EPOCH
PROJECT PRESENTATION**

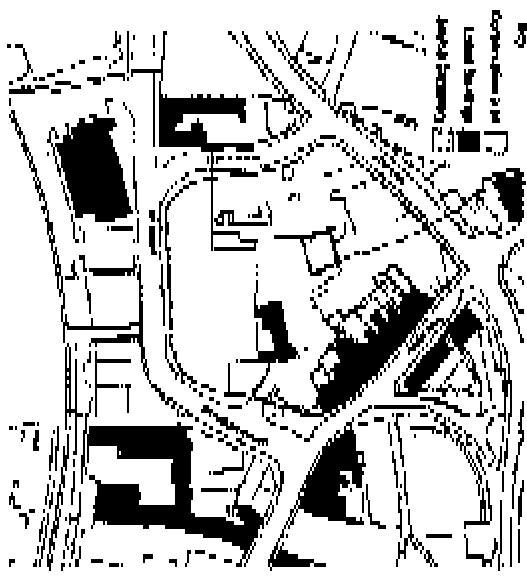
PROJECT NUMBER: 0000000001
DATE: 11 MAR 2011

PRESENTATION BOARD | EXISTING SITE



ARCHITECT

Investec
Space & Urban Form

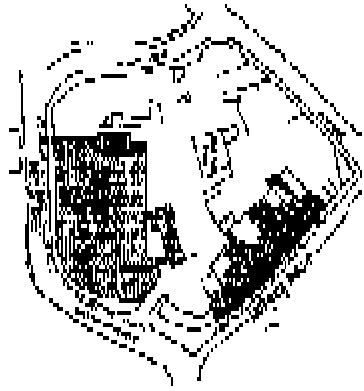


REF: 07030000001

EXISTING BUILDINGS

ARCHITECT

Investec
Special Funds 2014



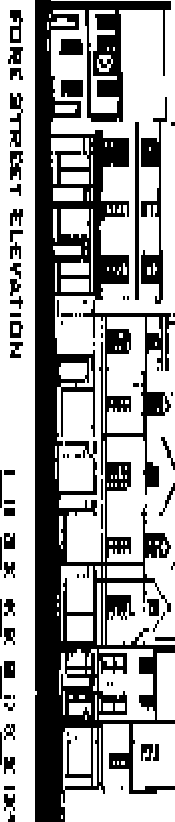
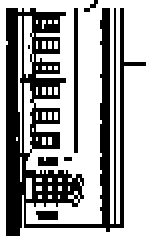
KEY STREET



STORE STREET

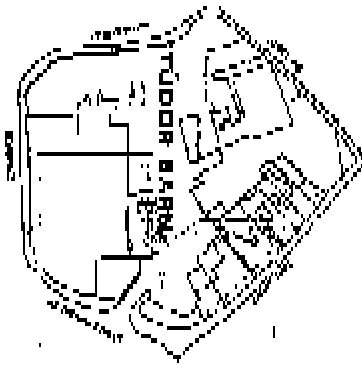


KEY STREET ELEVATION



FORE STREET ELEVATION

1:10 25' 0" = 1' 0" 0.25"



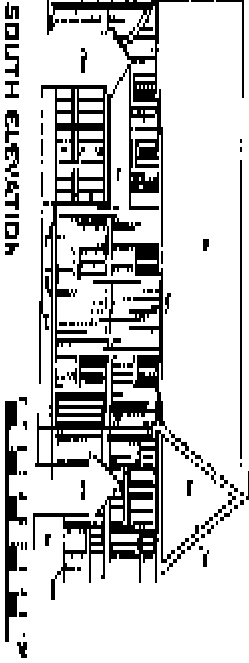
TUDOR BARROW



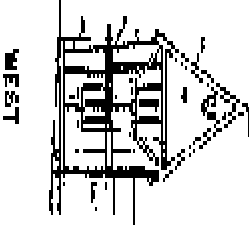
WEST ELEVATION



NORTH ELEVATION



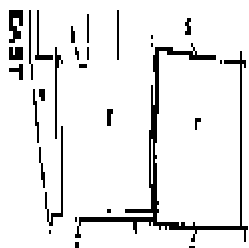
SOUTH ELEVATION



WEST



NORTH ELEVATION

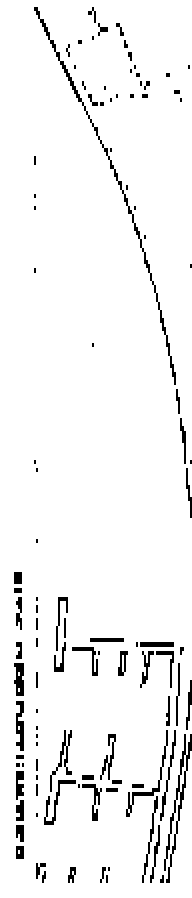
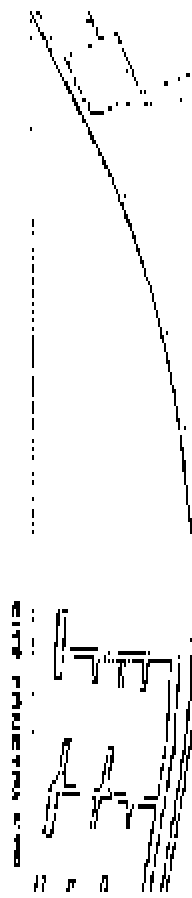
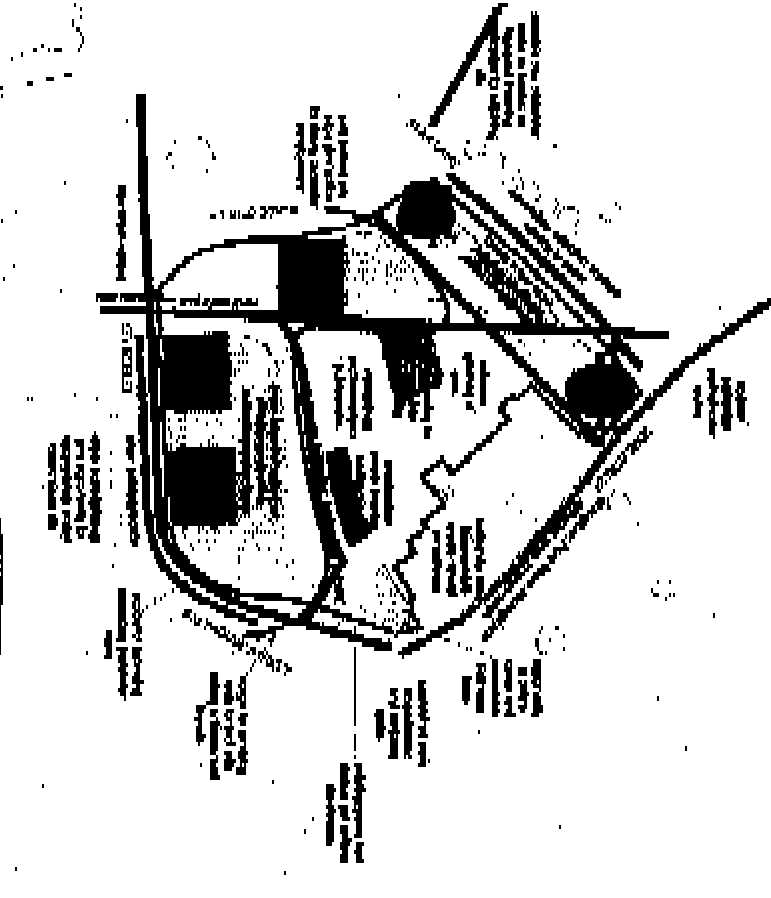
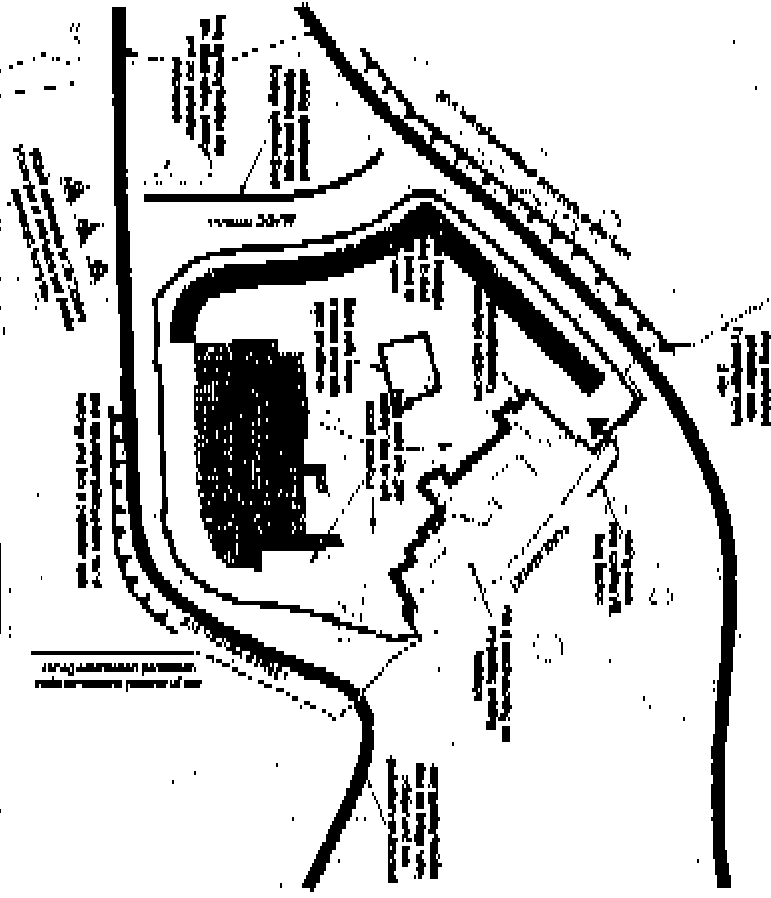


EAST



EXISTING - WINTER EQUINOX

SUNPATH - SUMMER EQUINOX





LEGEND



Planting to be installed in accordance with the 'Planting Schedule' for the project. The 'Planting Schedule' is a separate document which will be provided to the client upon completion of the project. The 'Planting Schedule' will include details of the plants to be installed, the quantities, the planting dates, and the planting methods to be used.

Planting to be installed in accordance with the 'Planting Schedule' for the project. The 'Planting Schedule' is a separate document which will be provided to the client upon completion of the project. The 'Planting Schedule' will include details of the plants to be installed, the quantities, the planting dates, and the planting methods to be used.

Concrete paving to be installed in accordance with the 'Planting Schedule' for the project. The 'Planting Schedule' is a separate document which will be provided to the client upon completion of the project. The 'Planting Schedule' will include details of the plants to be installed, the quantities, the planting dates, and the planting methods to be used.

Planting to be installed in accordance with the 'Planting Schedule' for the project. The 'Planting Schedule' is a separate document which will be provided to the client upon completion of the project. The 'Planting Schedule' will include details of the plants to be installed, the quantities, the planting dates, and the planting methods to be used.

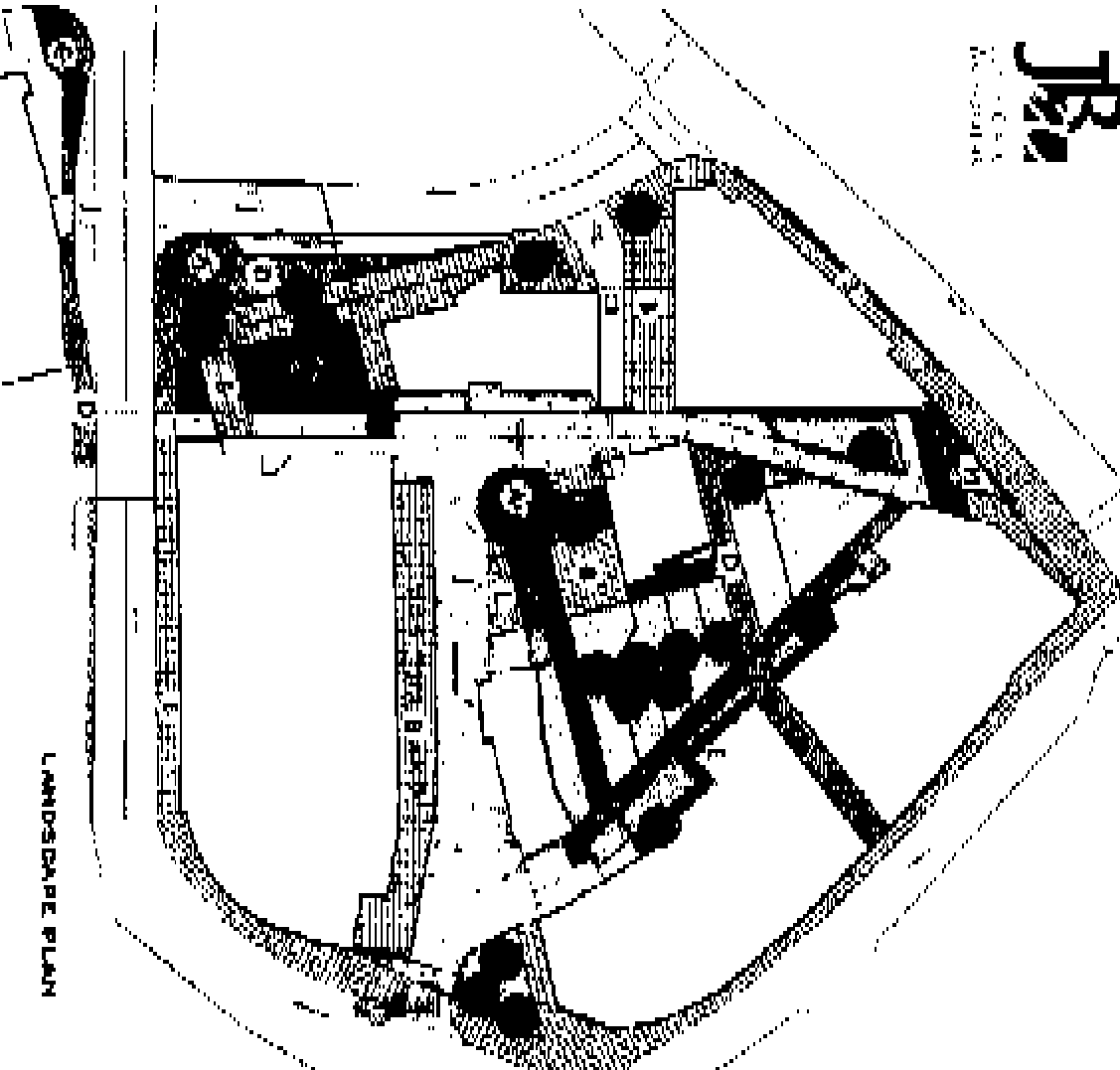
Planting to be installed in accordance with the 'Planting Schedule' for the project. The 'Planting Schedule' is a separate document which will be provided to the client upon completion of the project. The 'Planting Schedule' will include details of the plants to be installed, the quantities, the planting dates, and the planting methods to be used.

Planting to be installed in accordance with the 'Planting Schedule' for the project. The 'Planting Schedule' is a separate document which will be provided to the client upon completion of the project. The 'Planting Schedule' will include details of the plants to be installed, the quantities, the planting dates, and the planting methods to be used.

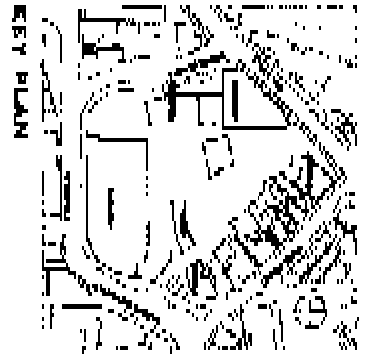
Concrete paving to be installed in accordance with the 'Planting Schedule' for the project. The 'Planting Schedule' is a separate document which will be provided to the client upon completion of the project. The 'Planting Schedule' will include details of the plants to be installed, the quantities, the planting dates, and the planting methods to be used.

Planting to be installed in accordance with the 'Planting Schedule' for the project. The 'Planting Schedule' is a separate document which will be provided to the client upon completion of the project. The 'Planting Schedule' will include details of the plants to be installed, the quantities, the planting dates, and the planting methods to be used.

Planting to be installed in accordance with the 'Planting Schedule' for the project. The 'Planting Schedule' is a separate document which will be provided to the client upon completion of the project. The 'Planting Schedule' will include details of the plants to be installed, the quantities, the planting dates, and the planting methods to be used.



LANDSCAPE PLAN



LEGEND:

- DT LOCAL ENTRY TO ROAD
- DT TO CURB
- DT CURB TO LOCAL ENTRANCE
- DT - PROPERTY BOUNDARY - OTHER - 1:1000
- DT ROAD CURB
- DT BOUNDARY TO ROAD FOOTWAY
- DT DRIVE



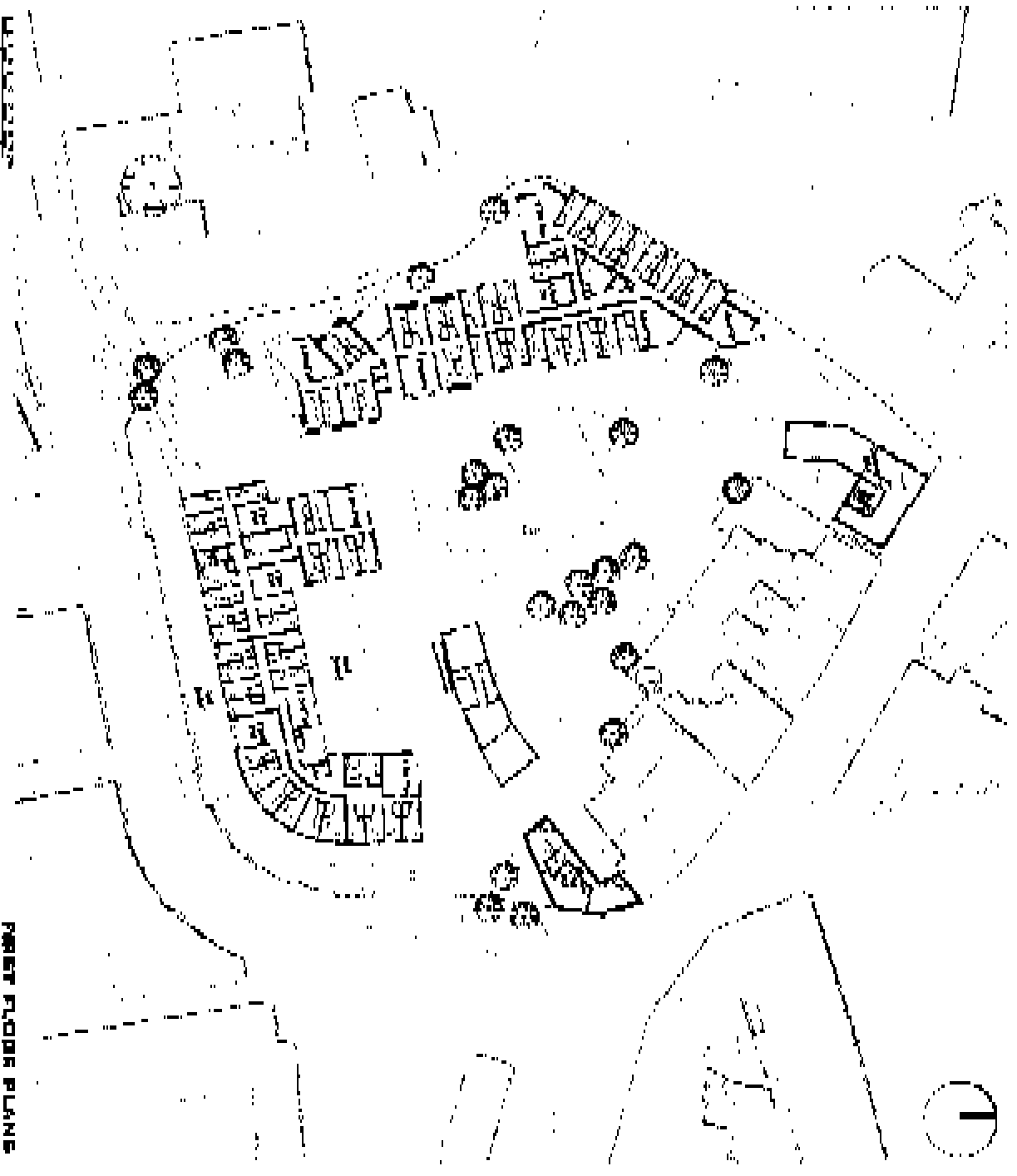
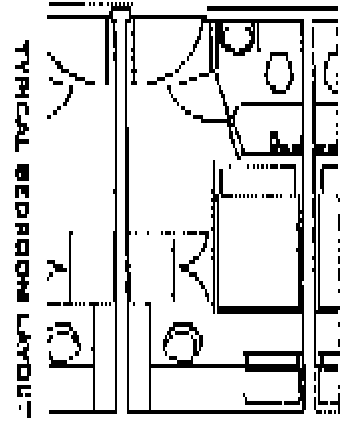
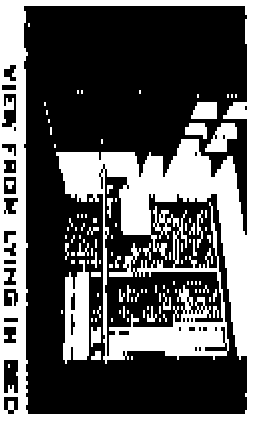
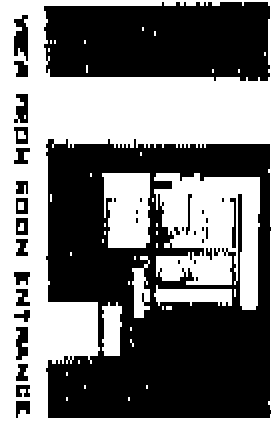
PRESENTATION BOARD - GROUND FLOOR PLANS

ARCH 001

 **Investec**
SPECIAL FINANCE



FORE STREET IPSWICH



REFERENCE: VIEWS B FIRST FLOOR PLAN

ARCHITECT

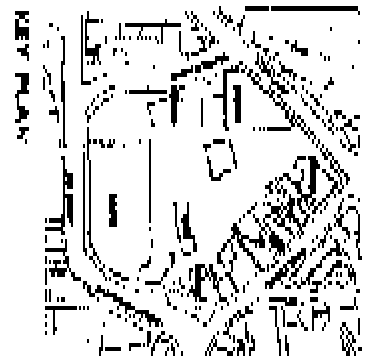
Investec
 EQUITIES INVESTMENT

FORE STREET IPSWICH

PRESENTATION BOARD TENTH-FLOOR PLAN (REVISED)

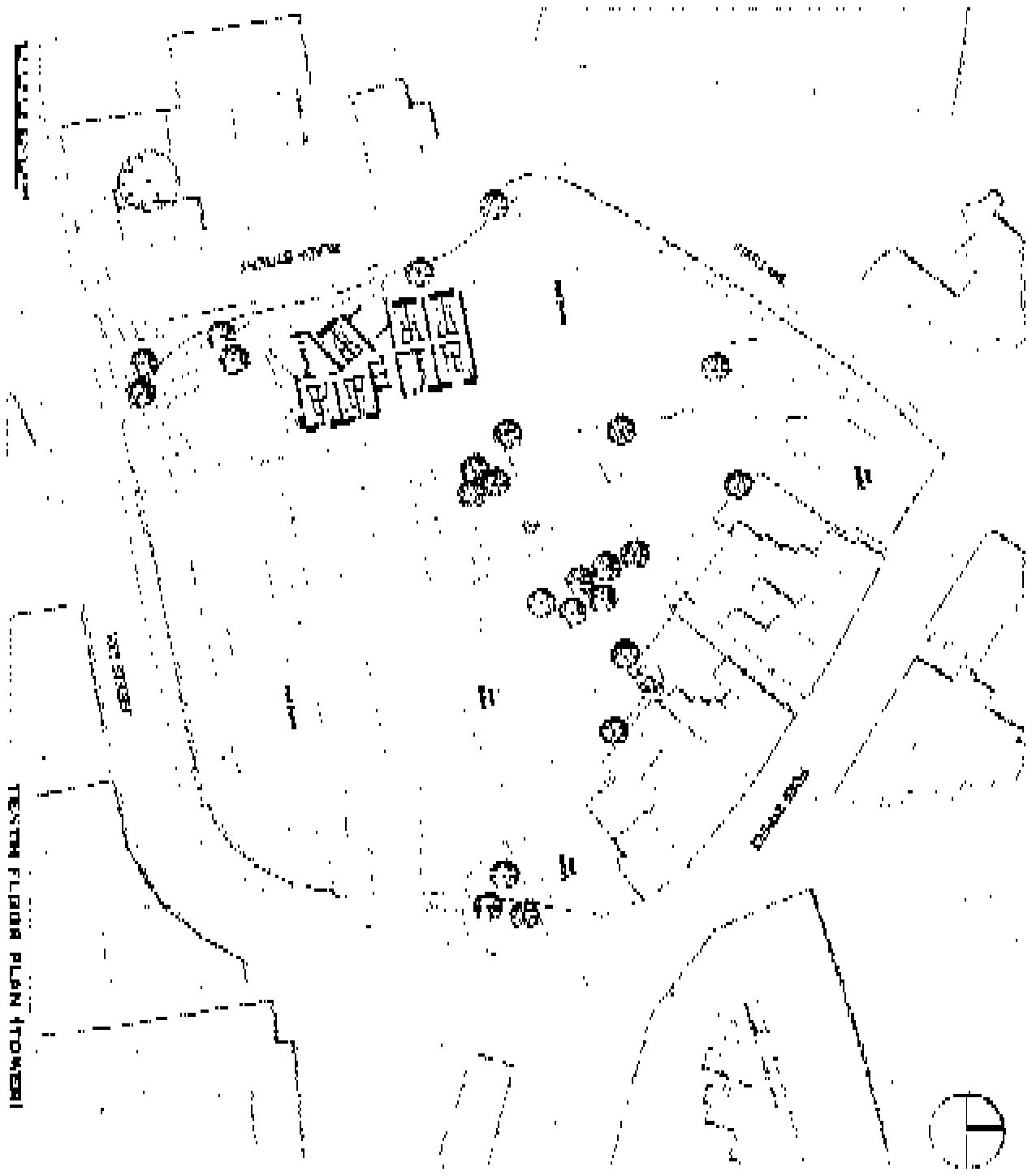
ARCH A L

Investec
SHEET 2 OF 25 (SEE BACK)

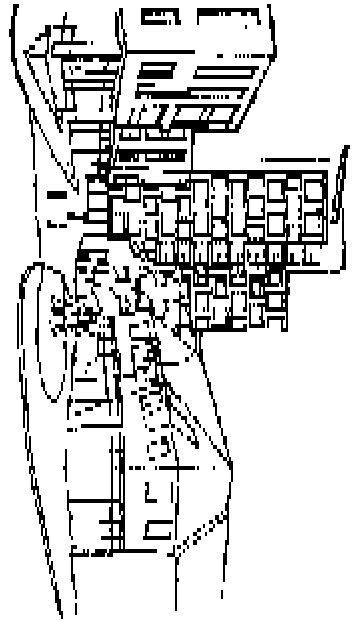


LEGEND:

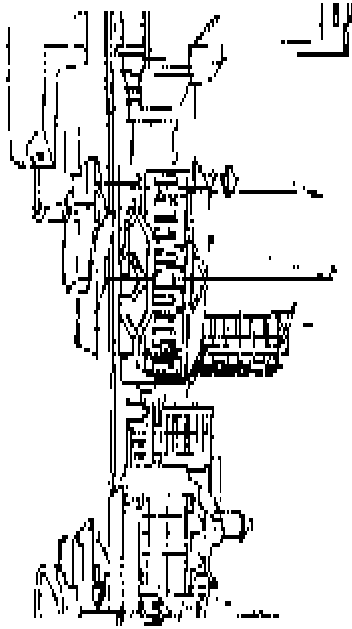
- OF FLOOR-BUILDING
- ETRS POINT
- PLUMBING SYMBOLS
- ALL METAL STRUCTURE
- STEEL JOIST
- CONCRETE (OTHER THAN)
- SI SYMBOL



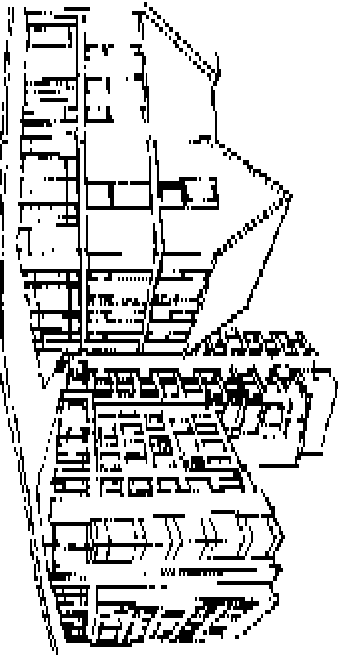
TENTH FLOOR PLAN (TOWER)



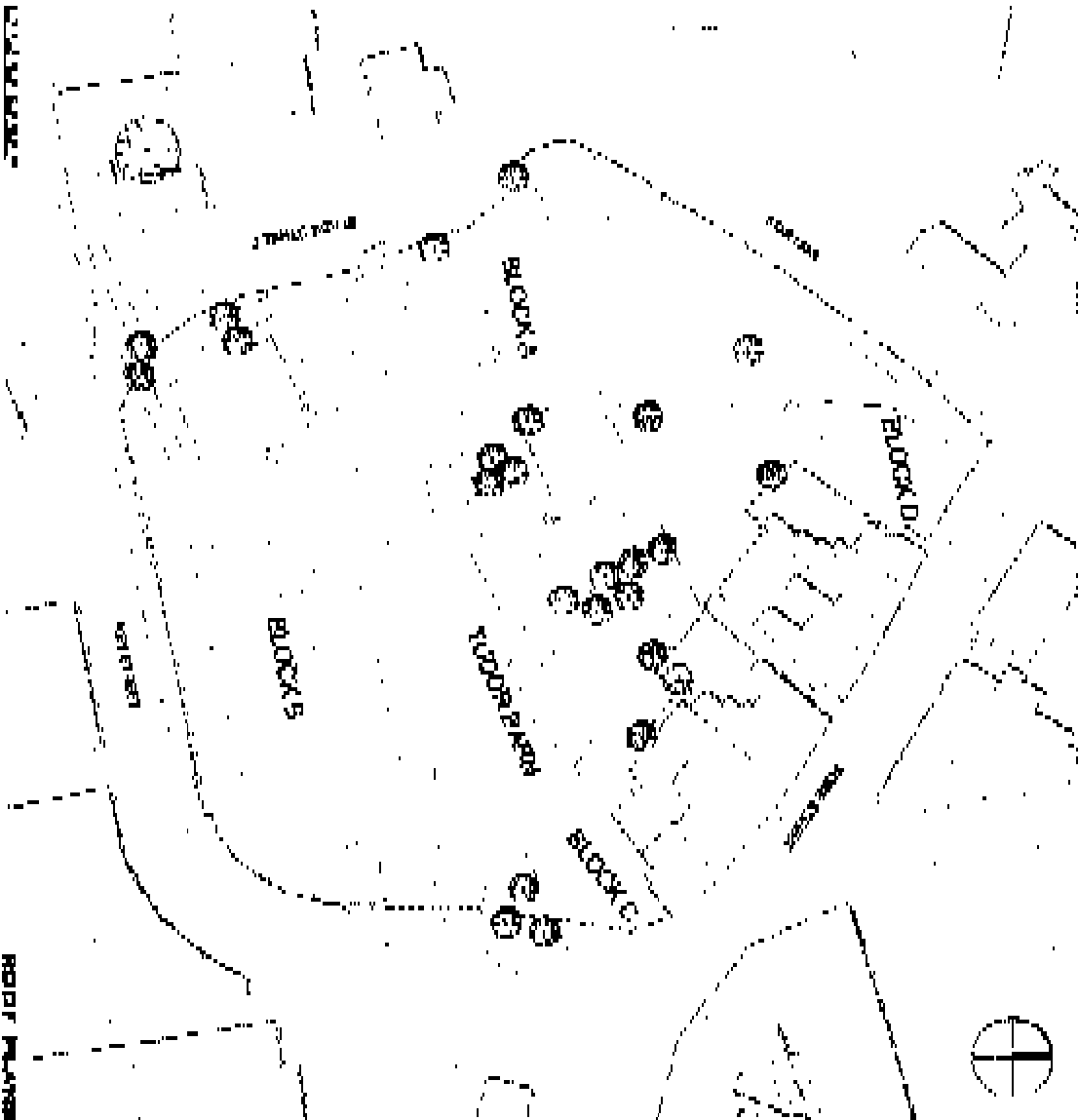
SKETCH 1 - SOUTH EAST CORNER VIEW



SKETCH 2 - VIEW FROM ABOVE THE MARCH

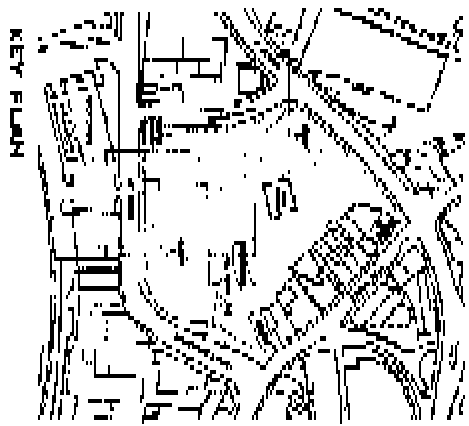


SKETCH 3 - VIEW FROM ROSE STREET (WEST)



ROOF PLANS

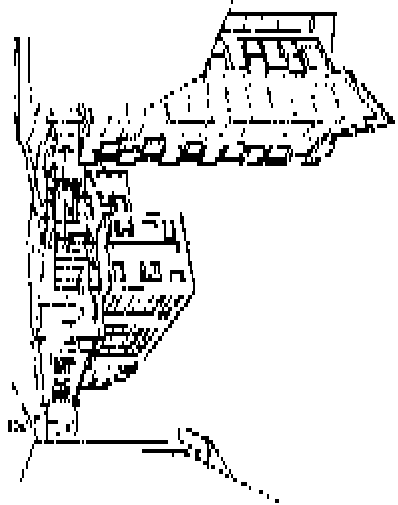
ROOF PLANS



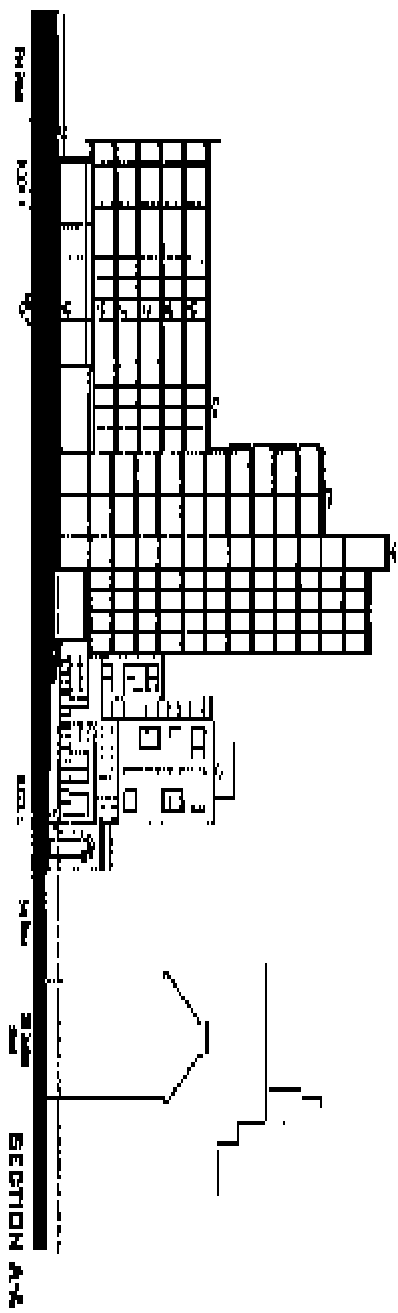
KEY PLAN



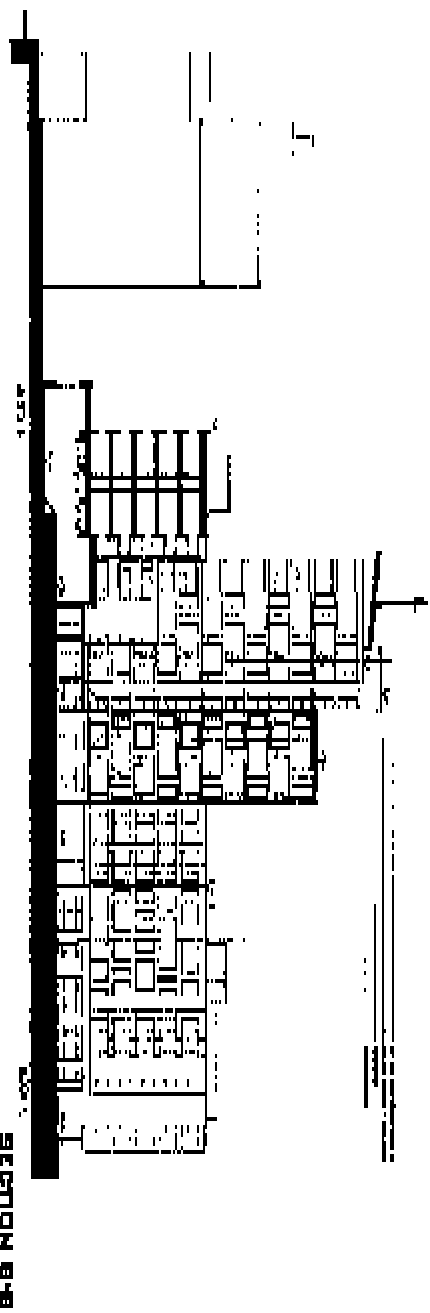
ELEVATION EXAMPLE



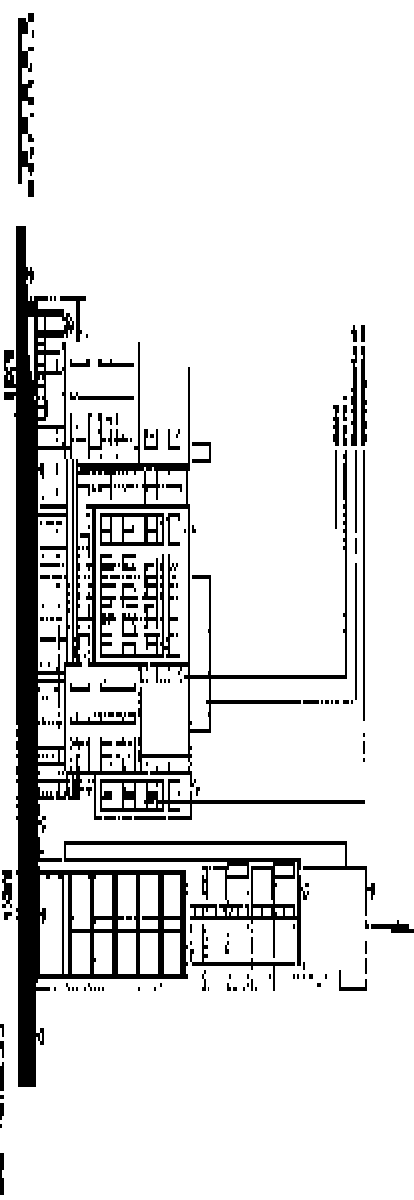
KEY STREET SECTION VIEW



SECTION A-A



SECTION B-B

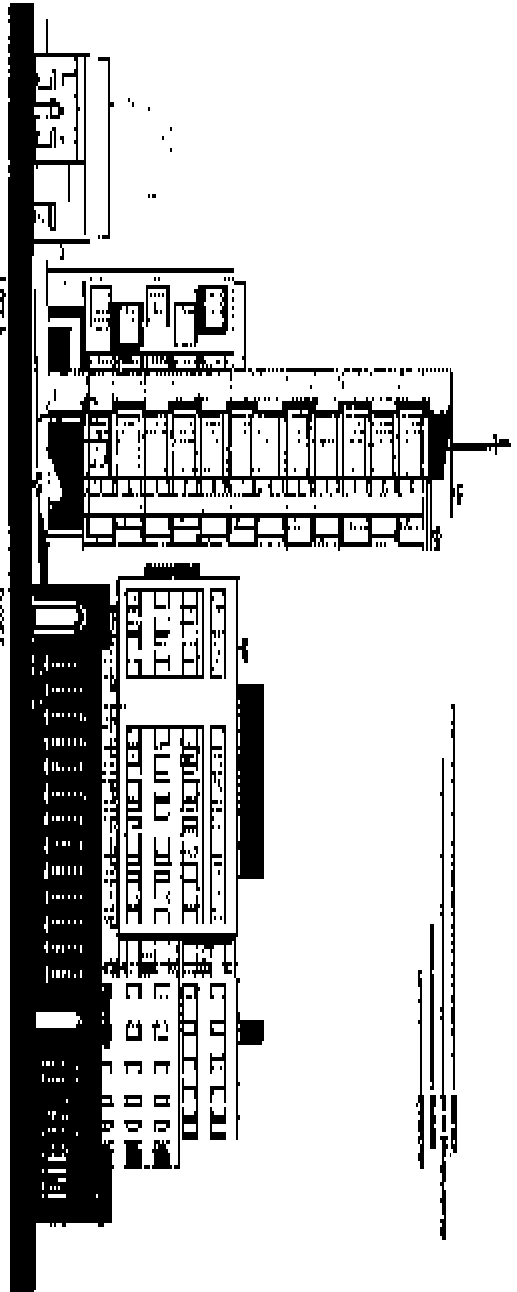
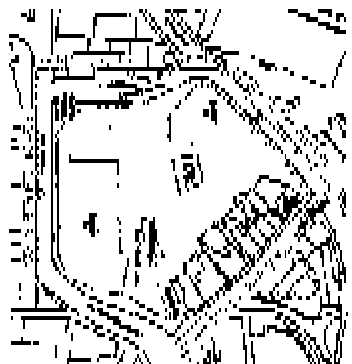


SECTION C-C

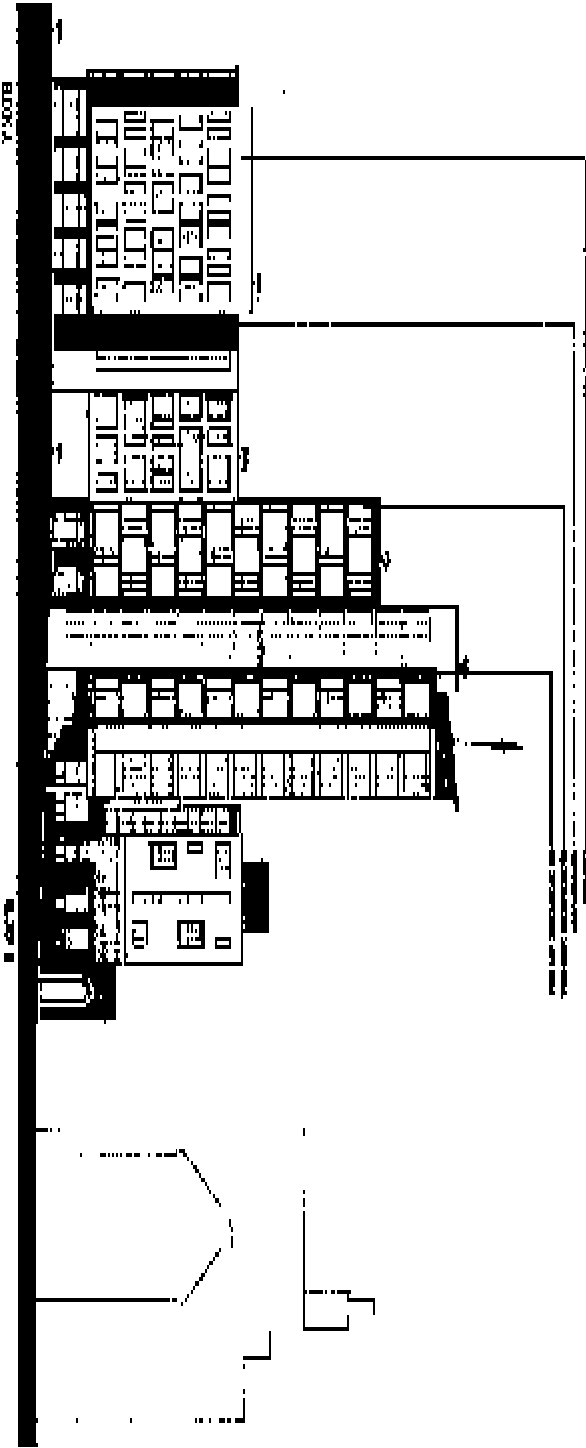
PRESENTATION BOARD 13 ELEVATIONS

ARCHITECT

Investec
SHEPHERD PEARCE LLP



KEY STREET ELEVATION



BLADE STREET ELEVATION

